

WIFI download tool

This tool is used to download the video automatic through wifi. The functions are as follows:

1. No matter in what way the device registered to the platform, as long as the Wifi parameter is set to the correct and connect to router, have entered into the Wifi area, then it can download automatic;
2. If the Device added download plan ,and the plan is activated, The tool will automatically through the Wifi to download video.
- 3.The wifi tool does not switch device registration way automatic, but if wifi got disconnected, then will automatically switch to another way to register. (3G and Wifi)
4. Registered mode switching and registration successful, the tool will automatically continue downloading video.

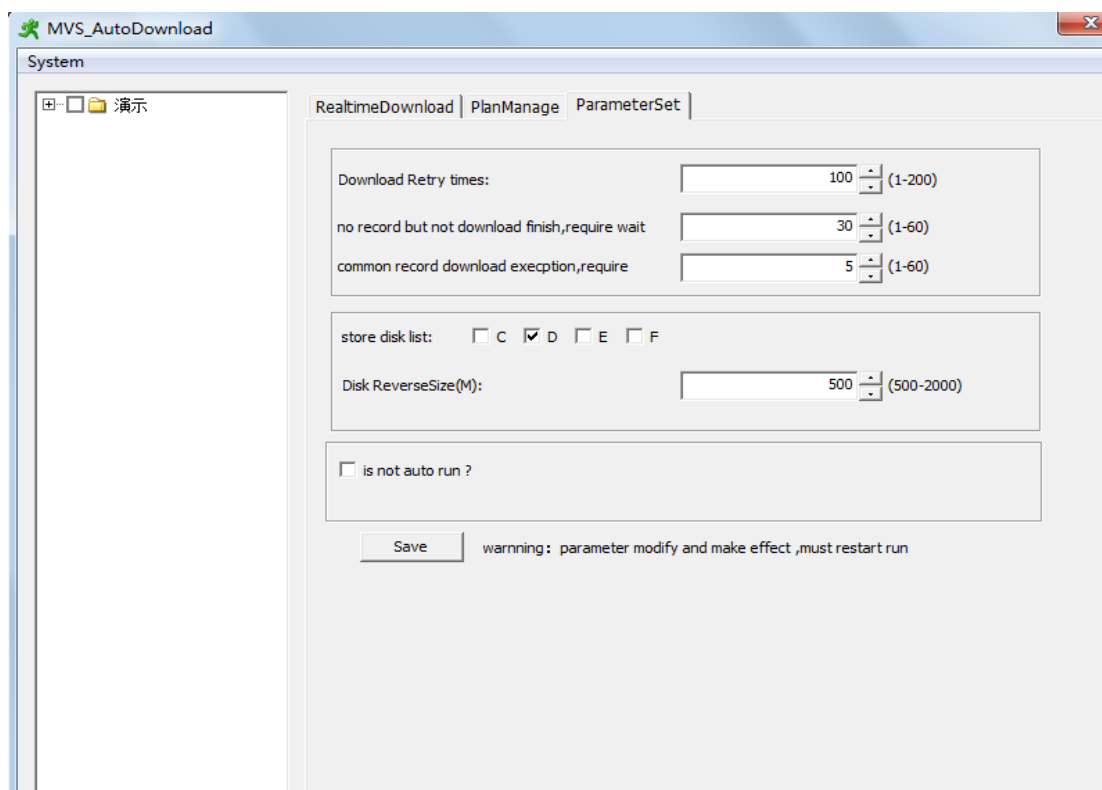
1.1 Log in

The Wifi login information is same as the MVS Client!

1.2 WIFI tool settings

Including the menu :Realtime Download ,Plan Manage ,Parameter SET

1.2.1 Parameter SET



Note: In addition to the interface language switching, the rest of the parameters will take effect when restart the software.

Download Retry times: How many time you want to retry after the failure downloading;

Each file download retry time: Retry times of download each video file after failure

No record but not download finish : The waiting time of No recording but not download finish

Download video abnormal waiting time: The waiting time of the abnormal appeared in downloading process

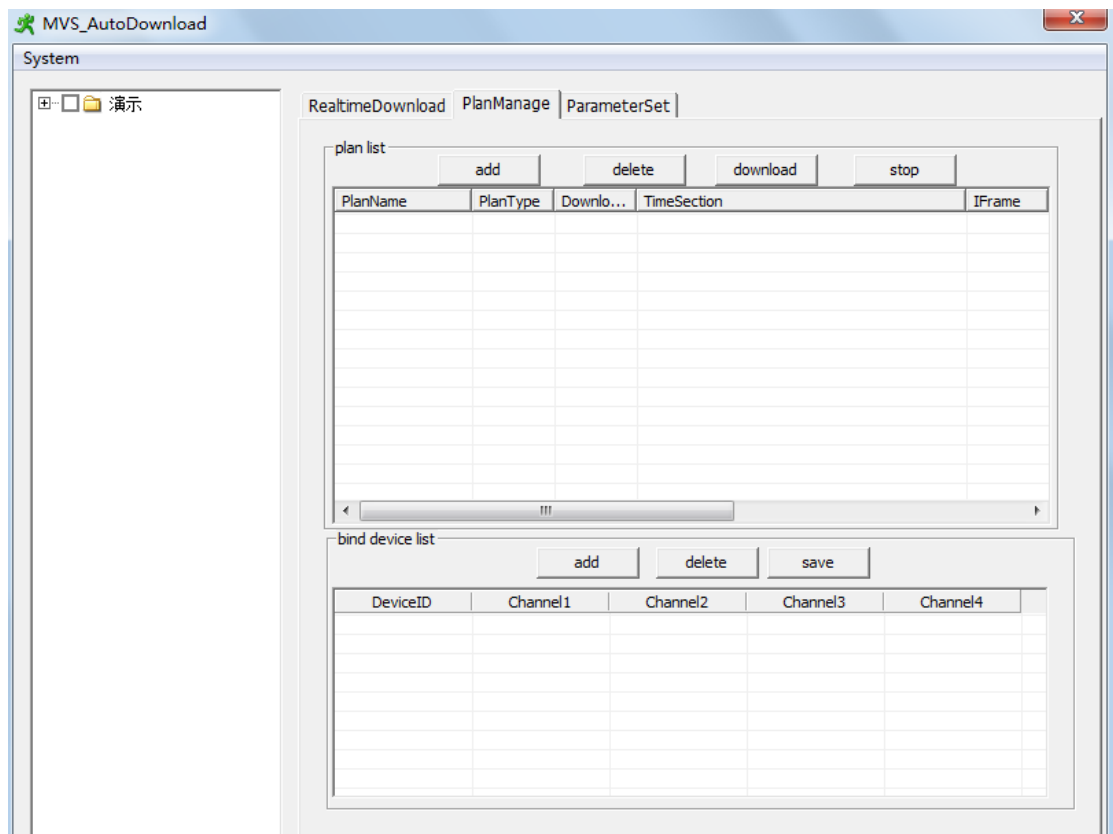
Store disk List: choose the Store disk of the downloaded video

Disk Reverse size: when choosing partition is less than this value will switch to next selected partition or delete the old video;

Is not auto run: Tick this option , when the PC star up , It runs wifi download tool automatically,Do not tick then do not automatic operation.

1.2.2 Plan manage

Click the plan manage option ,see below:



1.2.2.1 Add plans

Click the Add buttons ,see below:

The screenshot shows a 'plan info' dialog box with the following fields and options:

- PlanName: [Text Input]
- DownloadMode: [TimeMode]
- PlanType: [OneTime]
- RecordType: [Normal]
- Download Reverse Days: [7]
- IFrame: [Y/N]
- DownloadedAndDeleteFile: [Y/N]
- PlanTimesection:
 - StartTime: [2013/ 1/10] [0:00:00]
 - StopTime: [2013/ 1/10] [23:59:59]
- ExecuteTime:
 - [0:00:00] [23:59:59]

Buttons: OK, CANCEL

1. Inputing or selecting relevant information in plan info window, then click "ok" can complete plan adding;

Download mode: including time mode and file mode;

Plan type: one time Or Every day ,every day means download every day;

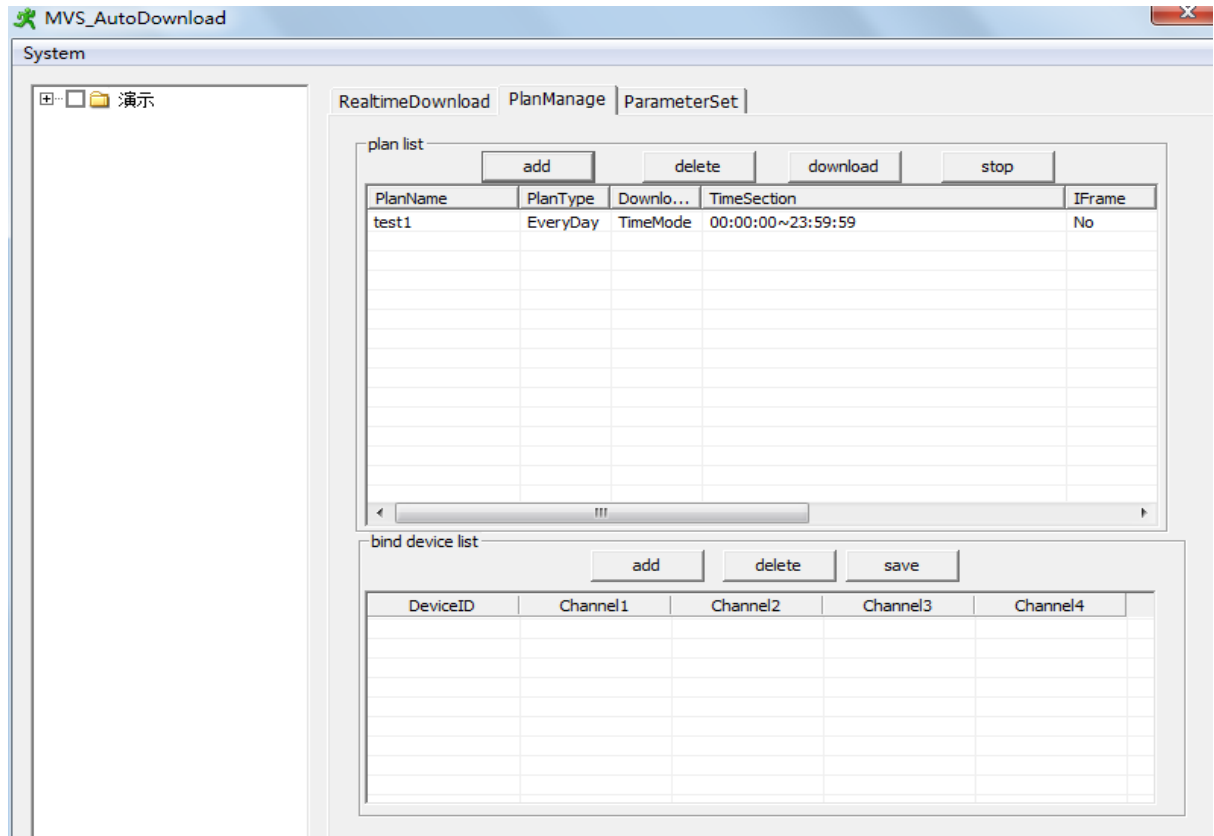
Record type: provide normal, alarm, all, three types of video download;

If I frame: "yes" means only download I frame, so download speed will be faster but may lose some important frame;

Whether delete files: "yes" means download delete device files after downloaded

Execute download time: Means "plan time" must in the period of Execute download time , if not cannot download.

2. Downloaded plan, you can see the added plan in the plan list ,see below:

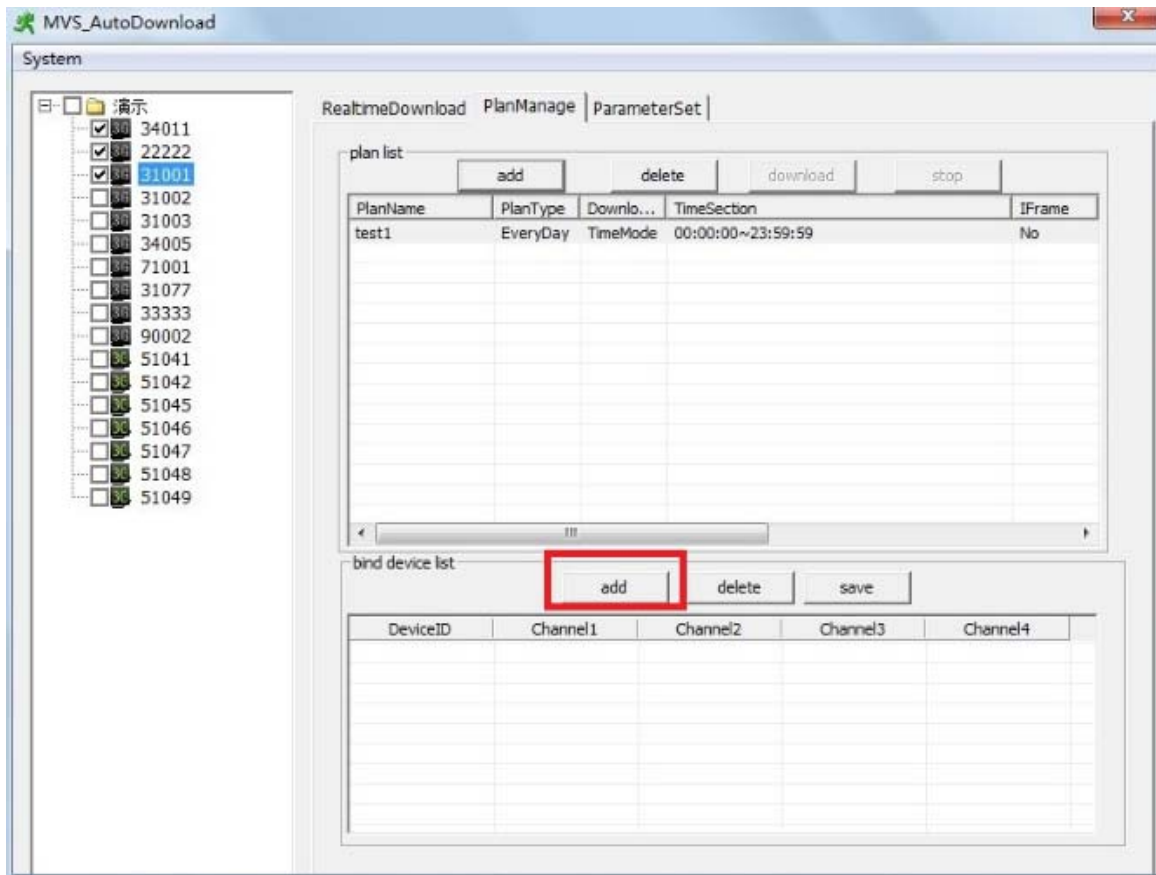


3. the default plan state is "not start", if you want to start planning need to click on the "download" button. If there is no binding device, plan can't start.

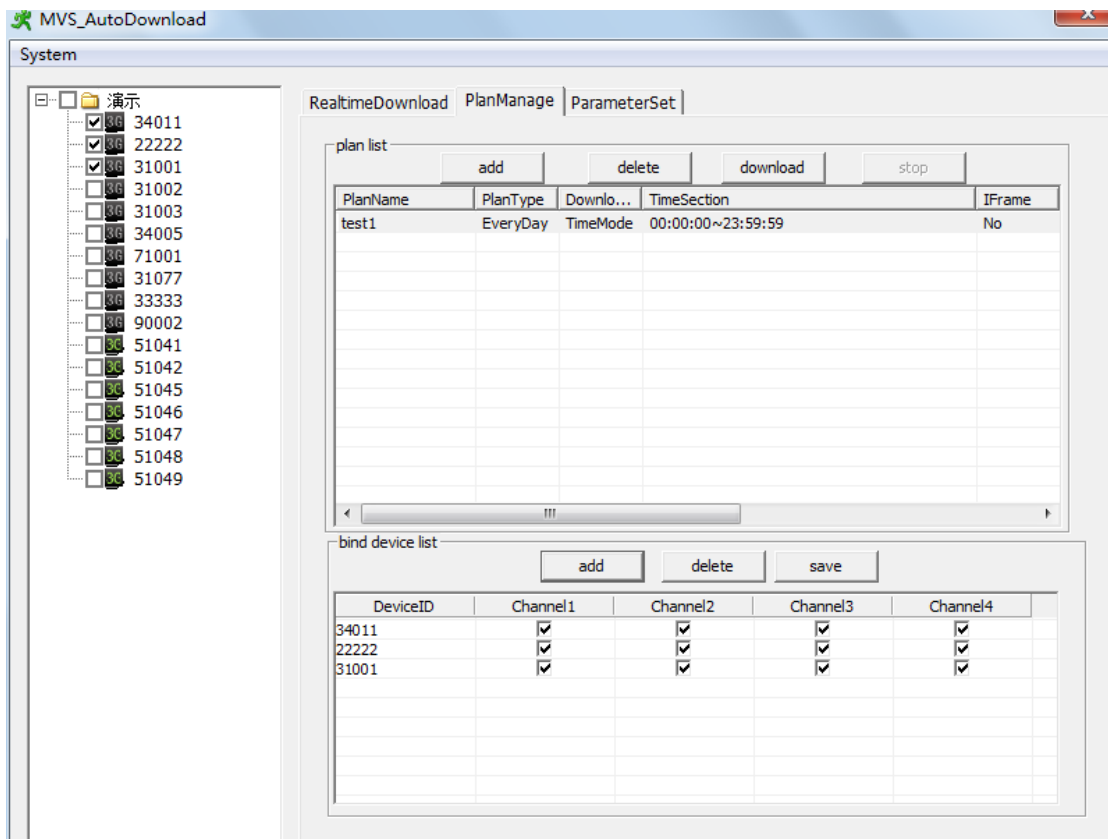
1.2.2.2 binding device

After added plan ,need to bind device, the plan will be carried out, and the being bound device will download video to local disk according to schedule. The operation steps are as follows:

1. Choose a plan in the plan list, and then check the device that you want to download in the device list on the left , and then click "add" button in the bind device list.



2. After binded device, the binded device shows in the bind device list, default bind to all channels video of device;



Note: One device can only be bound with ONE plan; Choose a different plan, it will show different binding list.

1.After the device binded ,click “ download” button to start wifi download!

1.2.2.3 Modify binding device

Modify binding device information, must first stop the plan progress, otherwise can't modify.

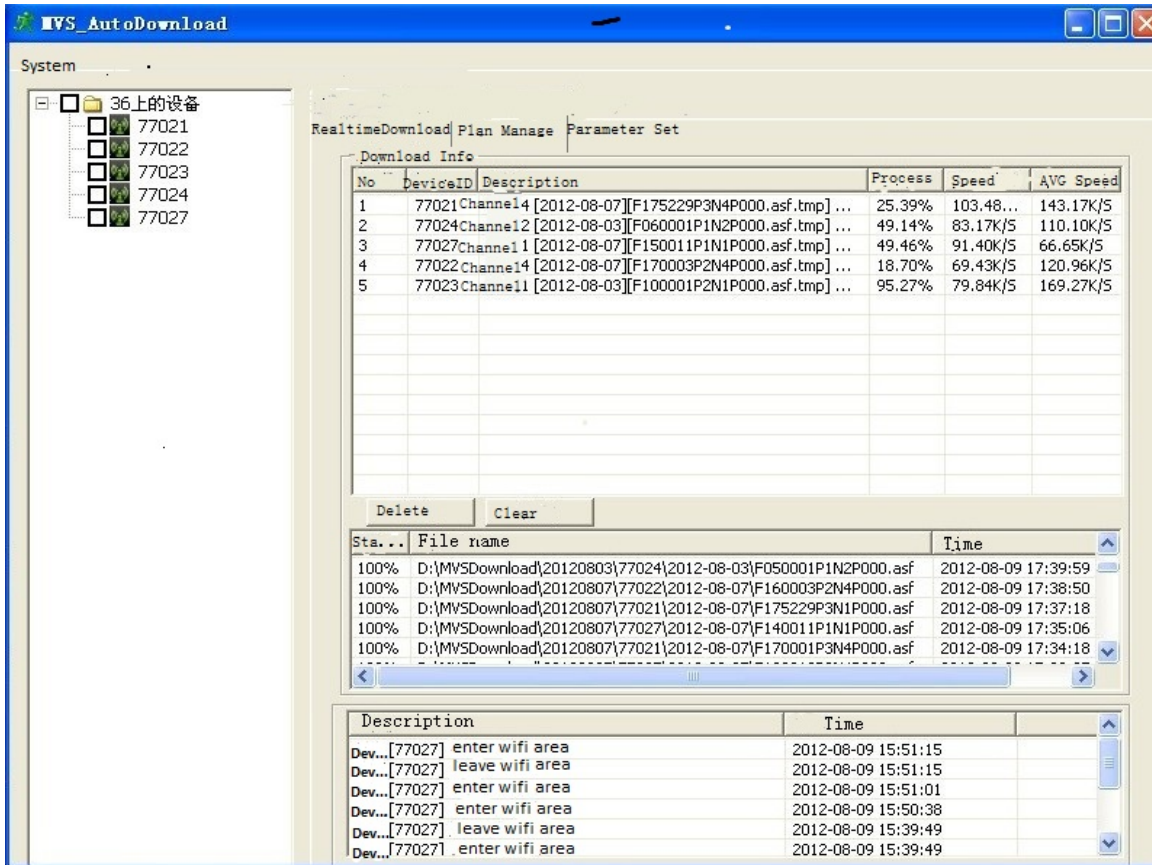
- 1, Stop device in the plan;
- 2, Modify the channel number directly in the bind device list;
- 3, Click "save" button.

1.2.2.4 delete plans and devices

Delete plan must stop the plan first , The runing programs and device can not be deleted. The plan be deleted, the binded device will be clear from the plan automatically

1.2.3 Real-time download

Click on the the "real-time download." into the real-time download interface (see figure below). In this interface, you can view the Wifi download video device information. As shown in the figure below:



1. Download info displays the channel currently downloading , and prompts of exceptions or network problems, The Progress shows the time of the video being downloaded
2. In the middle of the list shows download finished or unfinished video files, click "delete" can delete video files; Click on the "Clear" to clear all the files in the list.
3. In "Description" shows the information like online/offline of the device and status of entering/leaving the Wifi zone, etc..